

UserLock Getting started guide

Table Of Contents

1	Requirements.....	2
2	Install the UserLock server	2
3	Deploy the agent.....	2
4	Check user sessions	3
5	Configure UserLock	4
6	Check the protection.....	6
7	UserLock is ready.....	6

1 Requirements

In order to work UserLock needs the following requirements:

For the UserLock server

Windows NT 4 server SP 4, Windows 2000/2003 server.

For the UserLock console

Windows NT 4 SP 4 with Internet Explorer 5, Windows 2000/XP/2003

For workstations to protect

Windows NT 4 (no services pack requirements), Windows 2000, Windows XP

Warning! UserLock cannot protect *Windows 9x/Me* workstations.

For terminal servers to protect

Windows NT 4 TSE SP4, Windows 2000, Windows 2003, Citrix Metaframe XP

Normally all terminal servers using RDP sessions (Microsoft) or ICA sessions (Citrix) are supported but we did not test all solutions.

2 Install the UserLock server

The first thing to do is to install the *UserLock primary server* on the network zone you want to protect. To do this you just need to launch a standard installation using the UserLock install package.

Name of the install package:

UserLock_x86.exe for Windows NT 4

UserLock_x86.msi for Windows 2000/2003

The primary server can be installed on a domain controller or on a simple server belonging to a domain.

At the end of the installation the [UserLock service configuration wizard](#) starts automatically:

- Click *Next* on the welcome page
- Select *Primary server* as *server type* and click *Next*
- Select the zone you want to protect and click *Next*. The zone can be: **all domains** with trust relationships, **a single domain** or **an organizational unit** in a domain (Only in for Active Directory domains).
- Select a service account with administrative rights on all workstations of the zone and click *Next*.
- At the end of the wizard the UserLock service is automatically configured and started
- When you exit the wizard the *UserLock administration console* is automatically displayed.

3 Deploy the agent

In a first step we advice you to install the agent only on a few workstations.

In order to do this you need to:

Open the [UserLock administration console](#)

Get into the "[Agent Distribution](#)" scope to view the workstations of your zone

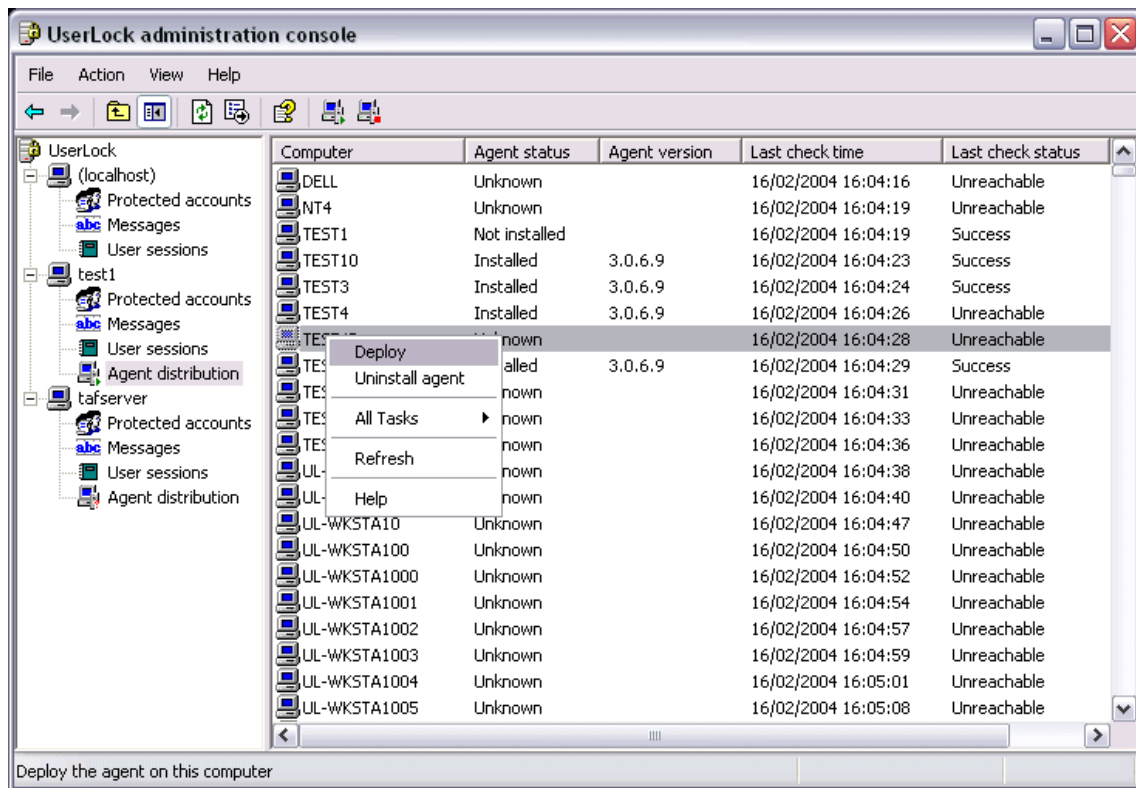
Select a few workstations

Display the context menu on the selection (right click of the mouse) and click *Deploy*.

Warning the agent will be working only after a reboot. If you want to reboot immediately you need first to check the *Force reboot* option in the *Agent distribution* properties.

You can follow the installation status for each workstation. You need do click *Refresh* in the *Agent Distribution* context menu in order to update the view. The status may take some times

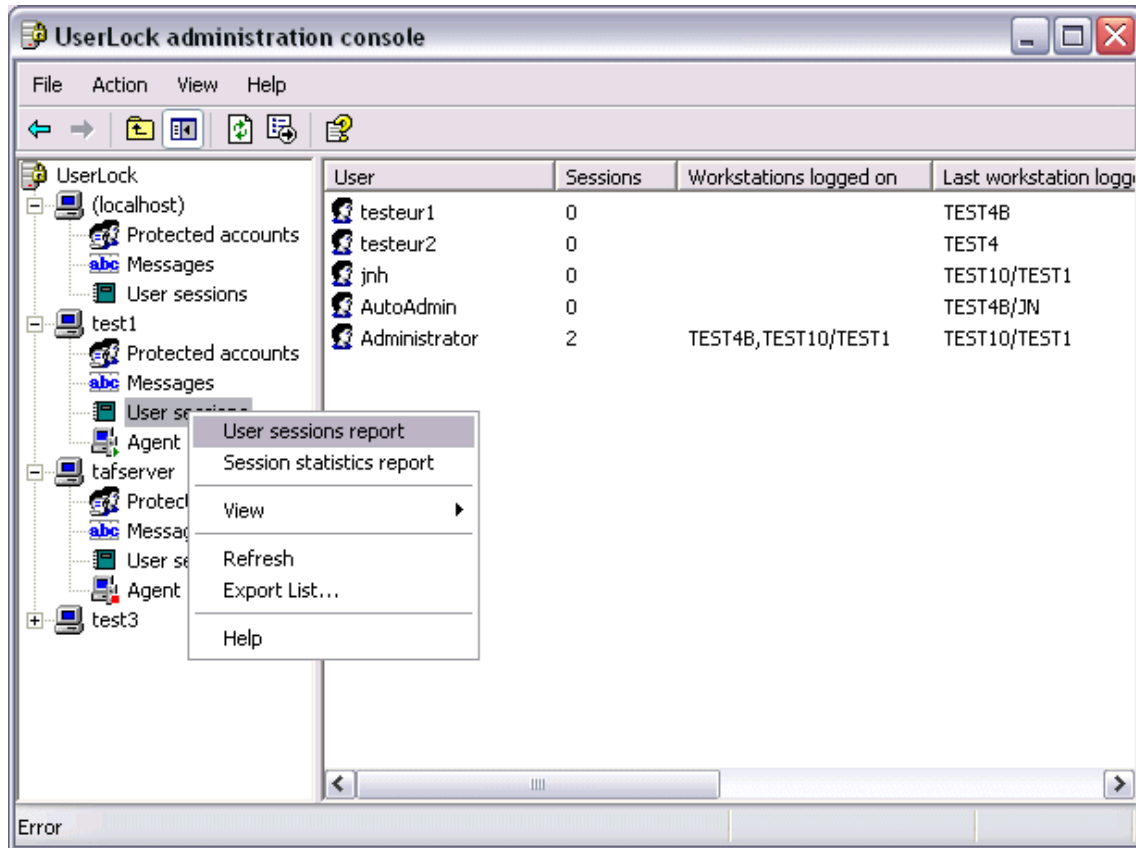
to be updated because the deployer iterate over all computers of the zone one by one.



4 Check user sessions

In order to check that UserLock works correctly, you can logon on a workstation previously installed, get back to the UserLock administration console and click on "[User sessions](#)" in order to check that the newly opened session can be shown here.

You can also try to display the [User sessions report](#) from the *User sessions* context menu in order to see or print the session history.



5 Configure UserLock

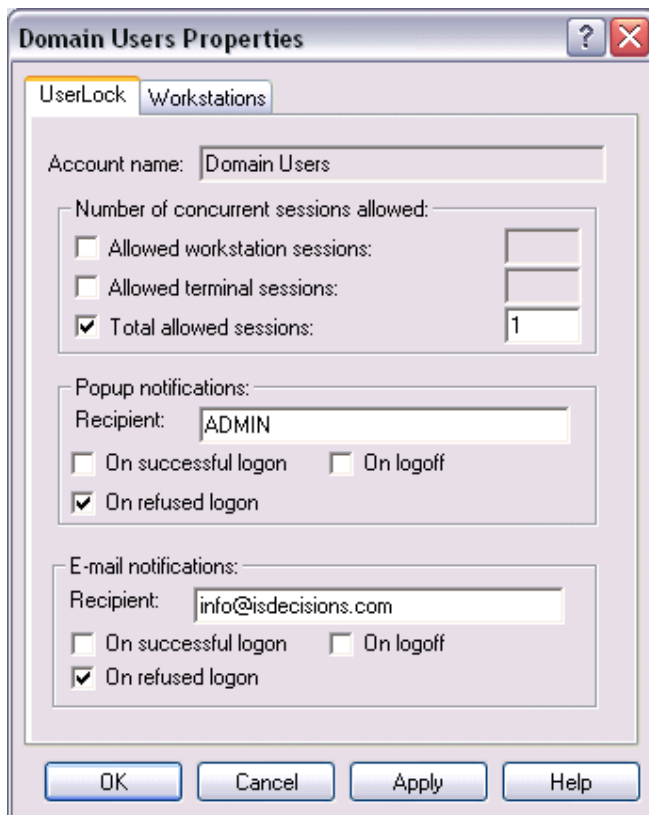
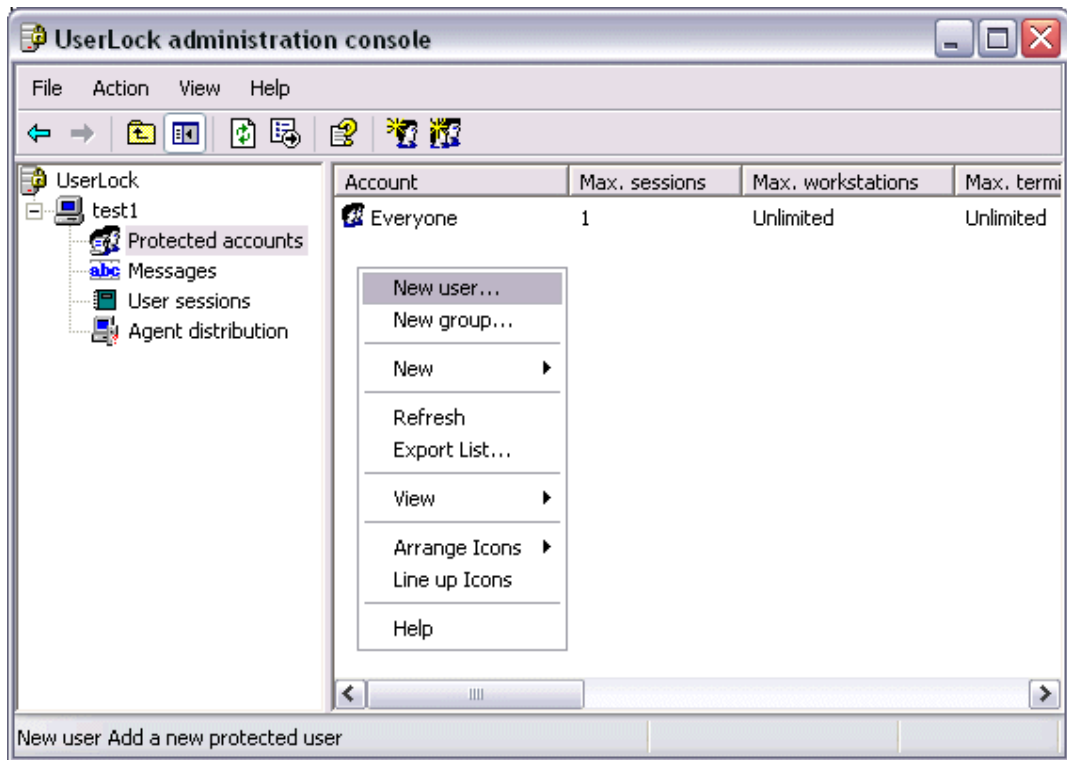
At this step in order to limit simultaneous user sessions you just need to:

In the UserLock administration console get into [Protected accounts](#)

In the context menu click on *New group* or *New user*

Configure the group or the user for only one simultaneous session (*Total allowed sessions*).

Click *OK*



6 Check the protection

You can try simultaneous logons on workstations on which the agent has been installed (using the user account previously configured) and you should not be able to open a second session.

7 UserLock is ready

At this step, if all is OK you can deploy the agent on your all workstations or terminal servers manually or using the automatic mode of the UserLock deployer. You can do this in the administration console with the [Agent distribution](#) scope item.

You can also install a [backup server](#) (optional) so UserLock will be able to protect your network even if the [primary server](#) is down.

UserLock is now ready to work!