

Administrators constantly need to have a clear vision of the entire infrastructure of their Windows NT/2000 computer network. Yet as more and more workstations and servers are added to the network, obtaining and managing data becomes increasingly difficult.

WinReporter[®] facilitates network management by retrieving all indispensable data linked to the functioning of the Windows NT/2000 network (LAN and WAN) and maintains retrieved information in an ODBC type central database.

More, WinReporter[®] offers a set of predefined reports that will help network administrators in their audit and monitoring tasks: hardware upgrades, software updates and licensing, security check ...

Features

General features

- Selection of the computers to scan with the network browser, manually or with IP ranges.
- Ability to scan trusted and non-trusted domains
- Ability to use snapshots in order to follow the evolution of the network.
- Use of a multithreading technology in order to scan a network at high speed
- No agent deployment required.
- Ability to schedule scans

Scanned information

Hardware

CPU, Memory, BIOS, Video adapters, Network adapters (TCP/IP configuration), partitions, printers

Windows NT/2000

Hotfixes, Event logs, services, SAM (users and groups), Shares, Shares permissions

Software

Installed applications, files information, files version, files permissions

Predefined reports

Hardware

- *General configuration*: Select computers according to frequency, memory size, total disk size and free disk space
- *Disk space analysis*: Select partitions of your network according to their size or free size (in GB or in %)
- *Disk space evolution*: follow the evolution of the free space in the time
- *Video configuration*: select computers according to video memory, color depth, horizontal resolution or refresh frequency.

Software

- *Install statistics*: Count the number or copies installed on your network for each software.
- *Products location*: Locate computers on which a specified software is installed;
- *Newly installed products*: Find recently installed applications (between two snapshots)
- *Software analysis policy*: Find computers that don't match your software policy according a list of approved/unapproved/required products.

Windows NT

- *Service Packs and Hotfixes*: Display computers with a Service Pack number lower than specified and with or without a specified hotfix installed.
- *Users in groups*: Displays members of a group, of the union of two groups and other combination.
- *Services analysis*: Display computers that don't match your services policy according a list of approved/unapproved/required/need to run services.
- *Local accounts analysis*: same report as previous but for local accounts
- *Local administrators*: same report as previous but for local administrators.
- *Shares analysis*: same report as previous but for shares.

General

- *Added/Removed computers*: display added and removed computers between two snapshots.
- *Generic query*: select records from a WinReporter table according to a simple criterion over one field.
- *Global report*: displays complete information about all your computers, users and groups of your Windows NT/2000 network.

Samples of use

Hardware/software updates

- Find all computers that don't have the latest Service Pack installed.
- Find the oldest computers of your network according to processors frequency criteria
- ...

Licensing

- Count all installed software on your network
- Detect all unregistered software
- ...

Disk space usage

- Get precise info about available disk space
- ...

Reporting

- List groups and users by domain, by computer
- List RAM sizes before migrating to a new OS or installing a new software

Supported platforms

For the computer running WinReporter:

- Windows NT 4/2000/XP
- Service Pack 4 or more and Internet Explorer 4.01 SP2 or more for Windows NT 4.0
- 64 Mo RAM
- 50 Mo free disk space

For computers being scanned:

- Windows NT 3.51/NT 4/2000/XP
- Windows 95, 98, Me with Microsoft Remote Administration and Registry service installed.

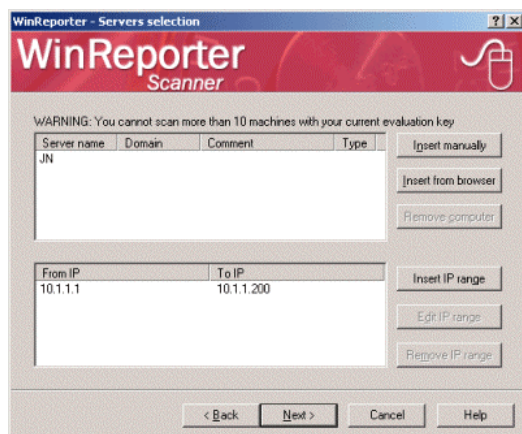


Figure 1 Computer and IP range selection before a scan



Figure 2 Selection of the hardware information to scan

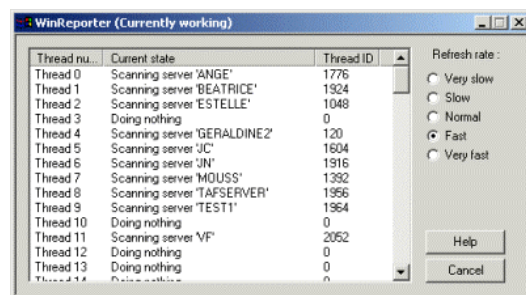


Figure 3 Scan progression

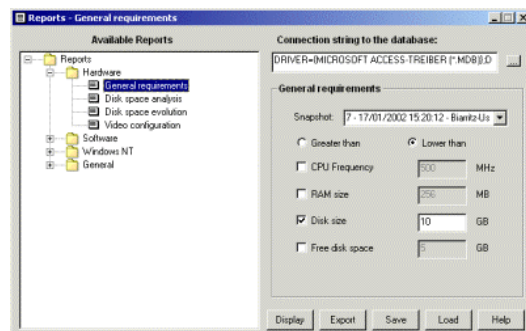


Figure 4 Configuration of a report

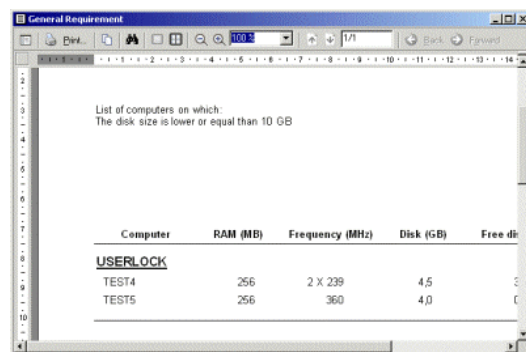


Figure 5 Viewing a report with the report viewer