

Director Version 3.1.0

Changes to Trigger logic:

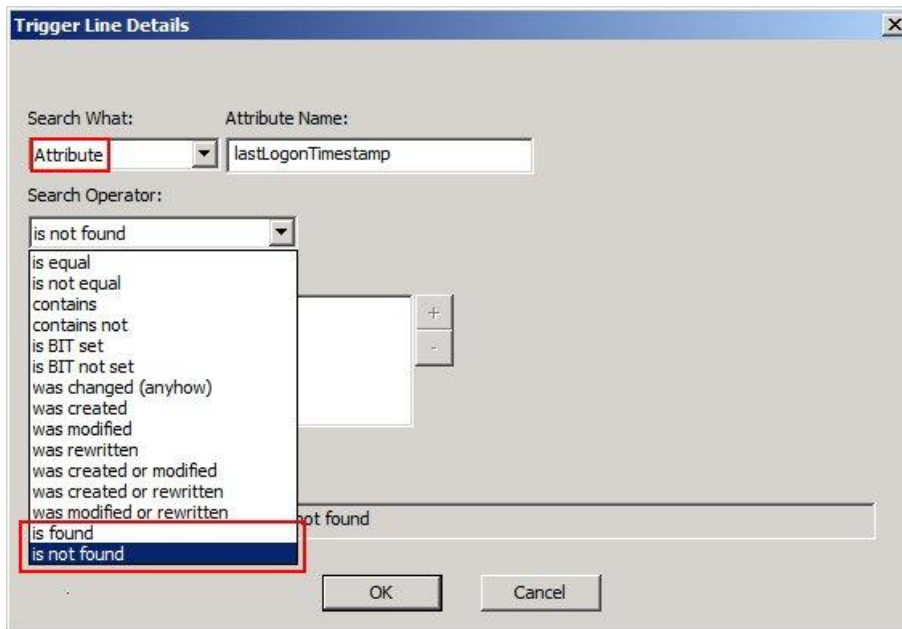
All changes described here are valid for triggers used in ChangeTracer Viewer, Administrator and Reporting tools.

(1) New Search Operators:

Type: *Functionality Improvement*

Two new 'Search Operators' have been added, 'is found' and 'is not found'. They can be used in conjunction with 'Attribute' being selected in 'Search What'.

- a) 'is found' the trigger is fired if the attribute given in 'Attribute Name' IS FOUND in the list of the attributes that were changed in the context of the object change.
- b) 'is not found' ... the trigger is fired if the attribute given in 'Attribute Name' IS NOT FOUND in the list of the attributes that were changed in the context of the object change.



NOTE:

The search operator 'is found' works the same way the 'was changed (anyhow)' search operator works. Until now it was not possible to filter data based on attributes out in searches, reports or trigger notifications. This is now possible using the 'is not found' search operator.

Changes to Administrator Tool:

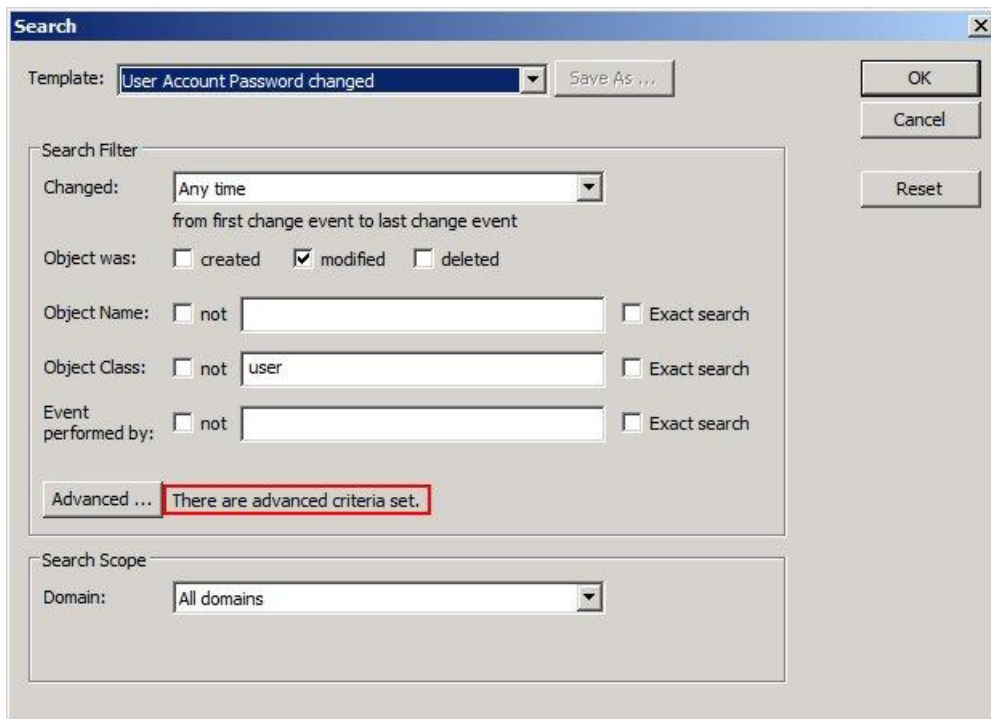
(1) Enhancement to Search dialog

Type: User Experience/Usability Improvement

A message text 'There are advanced criteria set.' next to the 'Advanced ...' button informs the user that the search filter contains advanced filter criteria.

No message text appears if the search filter does not contain advanced filter criteria.

See screenshot below.



The screenshot shows a 'Search' dialog box with the following elements:

- Template: User Account Password changed (dropdown menu)
- Save As ... button
- OK button
- Cancel button
- Reset button
- Search Filter section:
 - Changed: Any time (dropdown menu) from first change event to last change event
 - Object was: created modified deleted
 - Object Name: not [text box] Exact search
 - Object Class: not user [text box] Exact search
 - Event performed by: not [text box] Exact search
- Advanced ... button with text 'There are advanced criteria set.' (highlighted with a red box)
- Search Scope section:
 - Domain: All domains (dropdown menu)

NOTE:

Advanced filter criteria are only made visible and editable after pushing the 'Advanced ...' button.



(2) Enhancement to Object Details window

Type: User Experience/Usability Improvement

Attribute 'description' has been added to the attributes shown in the Object Details listview.

See screenshot below.

| Object Details | |
|-------------------|--|
| Attribute Name | Value |
| objectClass | top;group |
| description | Designated administrators of the domain |
| name | Domain Admins |
| objectCategory | CN=Group,CN=Schema,CN=Configuration,DC=PHOBOS,DC=MARS,DC=local |
| distinguishedName | CN=Domain Admins,CN=Users,DC=PHOBOS,DC=MARS,DC=local |
| ADsPath | LDAP://PHOBOS-DC2.PHOBOS.MARS.local/CN=Domain Admins,CN=Users,DC=PHOBOS,DC=MARS,D... |

NOTE:

Attribute 'description' is only shown if it has a value set in Active Directory.

(3) Attribute Advisor window

Type: User Experience/Usability Improvement, Functionality Improvement

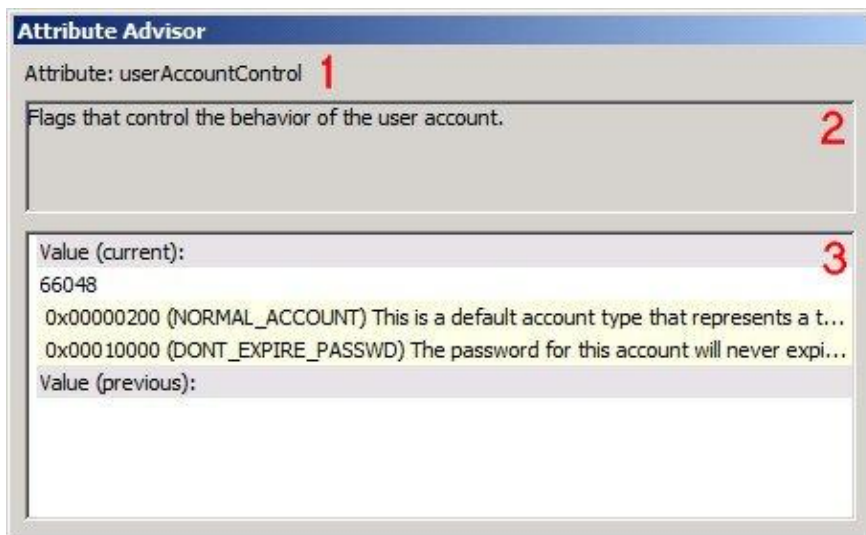
When opening the ChangeTracer Viewer tool a new window appears, the 'Attribute Advisor'. This new window can be enabled/disabled by a push on the button which is outlined in red in the screenshot as follows:



The 'Attribute Advisor' window is automatically filled with data whenever a user selects a line in the 'Attribute Change Events' listview. Currently more than 1250 attributes are covered.

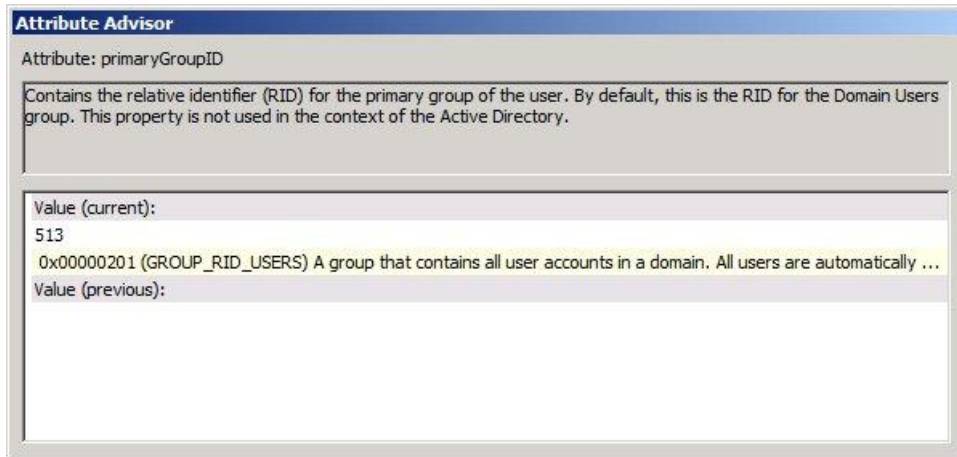
There are 3 areas which are filled with informational data.

- 1 .. the name of the attribute selected is shown next to 'Attribute:'.
- 2 .. shows a text describing the meaning/functionality of the attribute selected.
- 3 .. the current and previous Values are shown if present and in addition the values of several attributes are interpreted and shown in a detailed way



The example above shows information for the attribute 'userAccountControl'. Area 2 shows the text describing the functionality / meaning of 'userAccountControl'. Area 3 shows that the current value is 66048 (which is 0x00010200 in hex) and what 66048 means – it is a 'NORMAL_ACCOUNT' and has 'DON'T_EXPIRE_PASSWD' set, the previous value was empty.

The next example shows information for the attribute 'primaryGroupID'.



The screenshot shows a window titled "Attribute Advisor" with a blue header. Below the header, the text "Attribute: primaryGroupID" is displayed. A description box contains the text: "Contains the relative identifier (RID) for the primary group of the user. By default, this is the RID for the Domain Users group. This property is not used in the context of the Active Directory." Below this is a section for "Value (current):" which shows the value "513" and a tooltip for "0x00000201 (GROUP_RID_USERS) A group that contains all user accounts in a domain. All users are automatically ...". At the bottom, there is a section for "Value (previous):" which is currently empty.

The next example shows information for the attribute 'nTSecurityDescriptor'.

Attribute Advisor

Attribute: nTSecurityDescriptor

The NT security descriptor for the schema object.

Value (current):

O:DAG:DAD:AI(OA;;RP;4c164200-20c0-11d0-a768-00aa006e0529;;RS)(OA;;RP;5f202010-79a5-1...

Revision: 0x00000001

Control: 0x8c14

- SE_DACL_PRESENT
- SE_SACL_PRESENT
- SE_DACL_AUTO_INHERITED
- SE_SACL_AUTO_INHERITED
- SE_SELF_RELATIVE

Owner: PHOBOS\Domain Admins

PrimaryGroup: PHOBOS\Domain Admins

DACL

Revision: 0x04

AceCount: 0x002c

Ace[00]

- AceType: 0x05 (ACCESS_ALLOWED_OBJECT_ACE_TYPE)
- InheritFlags: 0x00
- AccessMask: 0x00000010
 - DS_READ_PROP
- Flags: 0x00000001
- ObjectType: Account Restrictions
- Ace Sid: PHOBOS\RAS and IAS Servers

Ace[01]

- AceType: 0x05 (ACCESS_ALLOWED_OBJECT_ACE_TYPE)
- InheritFlags: 0x00
- AccessMask: 0x00000010
 - DS_READ_PROP
- Flags: 0x00000001
- ObjectType: Logon Information
- Ace Sid: PHOBOS\RAS and IAS Servers